

Axia Fusion AoIP Console



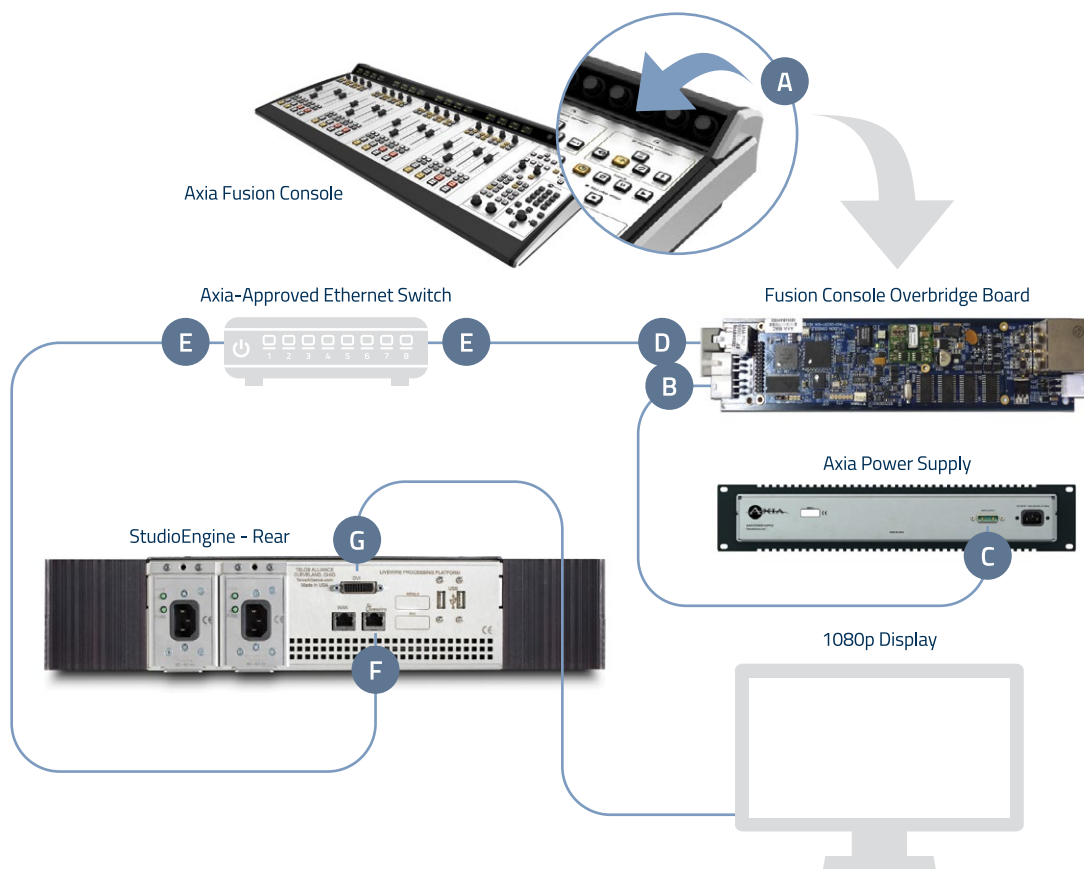
THANK YOU FOR PURCHASING THE AXIA FUSION CONSOLE.

We have made Fusion the easiest Axia console, ever, to set up. This quick start guide will take you through the basic steps to configure your new Fusion and have you up and running in no time. Before we get started, let's check your installation type and make sure you have what you need.

Installation type: You've got your choice of two mixing engines to pair with the Fusion, the **StudioEngine** or the **PowerStation**. We are providing instructions for both setups, so make sure you follow the instructions for your engine type.

THE FOLLOWING ITEMS ARE REQUIRED FOR INSTALLATION:

- Fusion Console
- Fusion Power Cable
- CAT5 Ethernet Cable
- Either a StudioEngine mixing engine and separate Axia Power Supply, or PowerStation mixing engine (with their appropriate power supply cables)
- 1080p Monitor with DVI Connector
- USB Keyboard (for PowerStation setup only)
- PC with network access
- Configured Network Switch

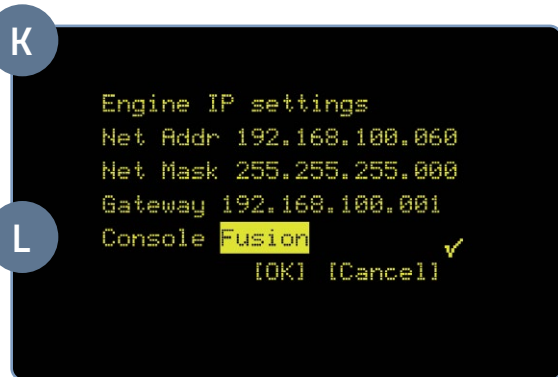
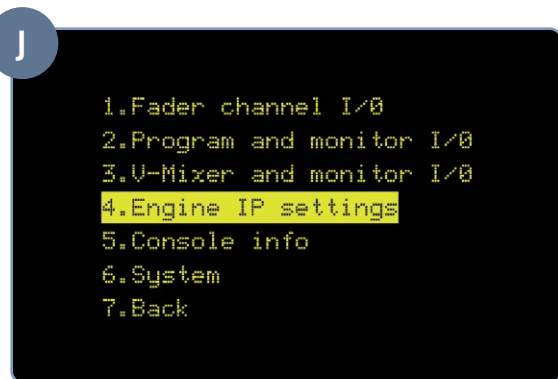


PHYSICAL CONNECTIONS WITH AXIA STUDIOENGINE

1. **Tilt** the overbridge panel of the Fusion Console (A) forward (toward faders) to gain access to the Fusion Console overbridge board.
2. **Connect** one end of the supplied Fusion power cable to the power port on the Fusion Console overbridge board (B). **Connect** the other end to the 48DVC Output port (C) on the rear of the Axia Power Supply. **Connect** the Axia Power Supply to AC Mains using the Axia Power Supply power cable provided.
3. **Connect** Ethernet cable to the network connection port on the Fusion Console overbridge board (D), **connect** other end to a configured Ethernet switch (E).
4. **Connect** Ethernet cable to the Livewire port (F) on the StudioEngine, **connect** other end to a configured Ethernet switch (E).
5. **Connect** a 1080p monitor to the DVI-D video port (G) on the StudioEngine.
6. **Close** the Fusion Console overbridge panel (A).
7. Continue to Network Configuration with Axia StudioEngine.

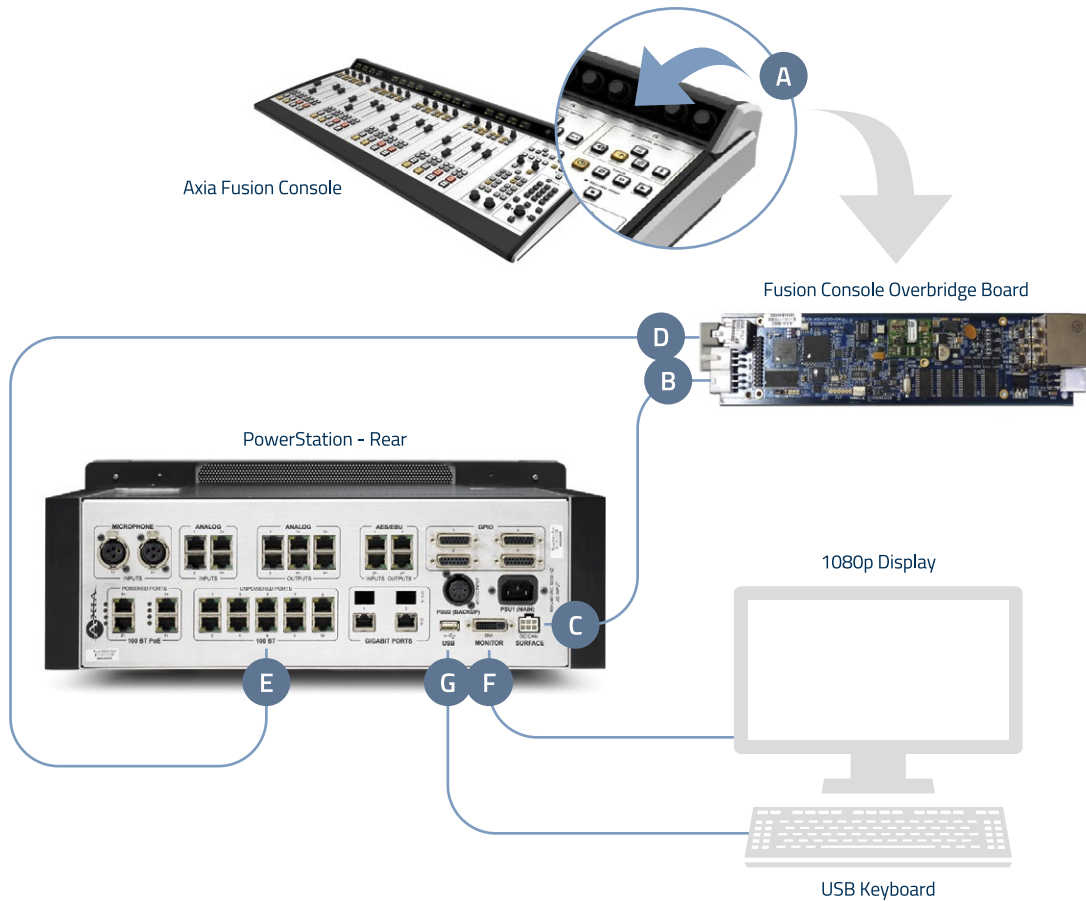
NETWORK CONFIGURATION WITH AXIA STUDIOENGINE

1. **Apply** Power to the StudioEngine. The front display should indicate an error due to sync issue-this is normal. An IP address is needed.
2. **Tap** the rotary encoder knob (I) on the front panel for a menu view, **rotate** knob until "Engine IP settings" (J) is highlighted, **tap** knob to select.
3. **Rotate** knob (I) to select "Net Address" and **tap** knob to select.
4. Once on the Engine IP settings screen (K), **rotate** knob (I) to move the cursor, **tap** knob to edit cursor position, rotate to increment value, **tap** knob to accept change. Repeat for all IP address values. Make a note of this IP address for further configuration in later steps.
5. **Select** check mark to right of address and **tap** knob (I) to accept.
6. Repeat for Netmask and Gateway as needed.
7. **Select** Console (L) and change the option to Fusion.
8. **Select** OK and **tap** knob to respond affirmative in order to reboot engine with new settings.



CONTINUE TO THE SYSTEM CONFIGURATION

The Console is now recognized by the network and is ready to be linked to the StudioEngine and configured to load sources. Continue to the "System Configuration" instructions.



PHYSICAL CONNECTIONS WITH AXIA POWERSTATION

1. **Tilt** the overbridge panel of the Fusion Console (A) forward (toward faders) to gain access to the Fusion Console overbridge board.
2. **Connect** one end of the 6-Pin molex power cable supplied with the PowerStation to the Surface port (B) on the PowerStation. **Connect** the other end to the power port on the Fusion Console overbridge board (C).
3. **Connect** Ethernet cable to the network connection port on the Fusion Console overbridge board (D), **connect** other end to an available network port on the PowerStation (E).
4. **Connect** 1080p monitor to the DVI-D video port (F) on the PowerStation.
5. **Connect** USB keyboard to USB port (G) on the PowerStation.
6. **Close** the Fusion Console overbridge panel.
7. Continue to Network Configuration with Axia PowerStation.

NETWORK CONFIGURATION WITH AXIA POWERSTATION

1. **Boot** the PowerStation, a setup screen (I) will appear on the connected video monitor. An IP address is needed.
2. **Tap** the up arrow key on the attached keyboard until the "Config IP addr" value is in yellow text.
3. **Clear** the current value with the Backspace key on the attached keyboard and use number keys to enter a new value. Make a note of this IP address for further configuration in later steps.
4. **Tap** the arrow keys on the attached keyboard to navigate to "Config NetMask" and "Config Gateway", enter the needed values.
5. **Tap** the down arrow key on the attached keyboard to navigate to "Save & Reboot". **Tap** the Enter key on the attached keyboard to reboot system.
6. **Disconnect** USB keyboard from PowerStation.

I

System Setup

Unit id: LWPS802392 (192.168.2.50)
Unit MAC: 00:50:C2:80:23:92
Connected Screen: 1024x768
Config IP addr: 192.168.2.50
Config Netmask: 255.0.0.0
Config Gateway: 192.168.2.1
Save: -

CONTINUE TO THE SYSTEM CONFIGURATION

The Console is now recognized by the network and is ready to be linked to the PowerStation then configured to load sources. Continue to the "System Configuration" instructions.

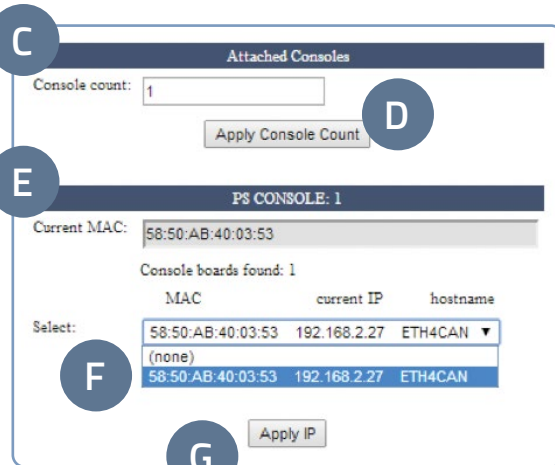
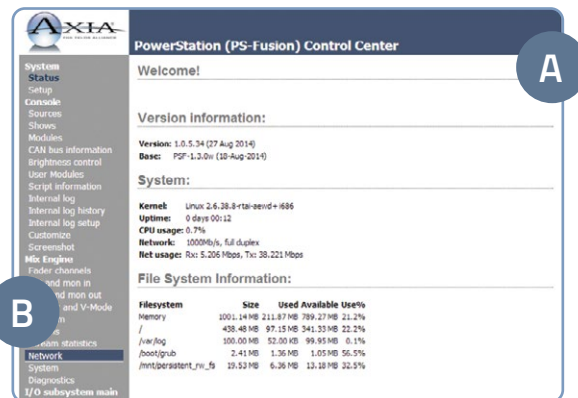
INSTALLATION HELP

If you have more questions, you can access the full manual online at <http://www.telosalliance.com/Axia/Fusion> or call the Telos Alliance 24/7 Support Team at +1 (216) 622-0247, we'd be happy to help you out.

SYSTEM CONFIGURATION



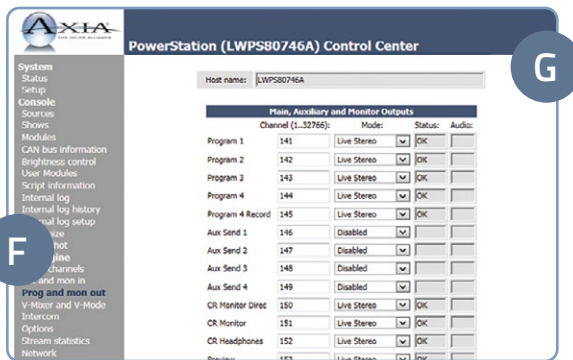
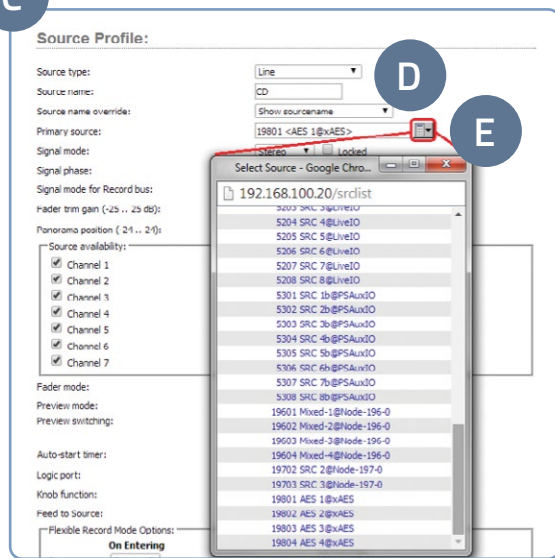
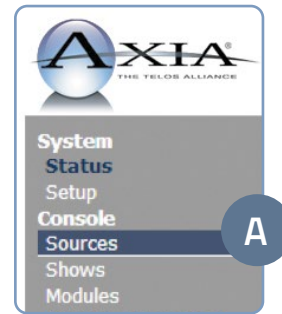
1. Using a PC connected to your studio network, **launch** a web browser and **enter** the assigned IP address into the browser's address bar. When prompted for authentication **enter** user name "user", password is left blank.
2. The Fusion control center will launch (A). In the left column, under "Mix Engine", **select** the "Network" link (B), **click** the "Install" button at the bottom of the new page.
3. **Enter** the value "1" into the "Console Count" field (C) and **click** "Apply Console Count" (D).
4. In the "PS CONSOLE: 1" (E) section, **select** the discovered console from the drop down menu (F). **Click** "Apply IP" (G) to set the IP address and link it to StudioEngine or PowerStation.
5. Your Console is now connected and will display "Inactive" on each channel. On the Monitor Module keypad (H) **Press and hold** the "*" key and "2" key until "Capture" is displayed.
6. **Release** the keys. For the full-sized Fusion Monitor/Navigation Module, **press** the "Enter" key, for a Fusion Monitor + 2-Fader Module, **press** the "#" key.
7. Remain logged in to the Fusion Control Center and continue to Source Configuration.



SOURCE CONFIGURATION



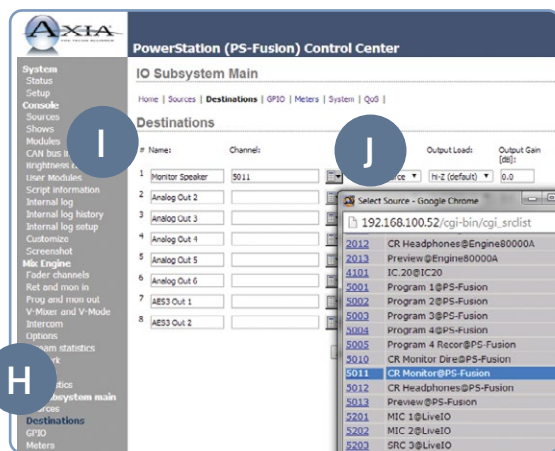
1. In the Fusion Control Center, in the left column under "Console", **select** "Sources" (A).
2. **Click** the "Create New Source Profile" button (B).
3. On the Source Profile screen, **select** "Source Type" from the drop down list (C).
4. **Enter** the name of the source in the "Source name" field (D).
5. **Click** the browse button to the right of the "Primary source" field (E) and select the desired source from the list.
6. **Click** "Apply".
7. In the left column under "Mix Engine", **select** "Prog and mon out" (F).
8. **Enter** (G) the planned channel numbers for either the StudioEngine (Livewire Sources) or PowerStation (Livewire Sources from DSP) outputs.
9. **Click** the "Apply" button.
10. StudioEngine users-skip Step 11 and proceed to Step 12.
11. PowerStation users continue to the next step below, "For PowerStation users ONLY".



FOR POWERSTATION USERS ONLY

This step configures the designated output on the back of the PowerStation which provides audio to the monitor speaker amplifier for the CR Monitor DSP source.

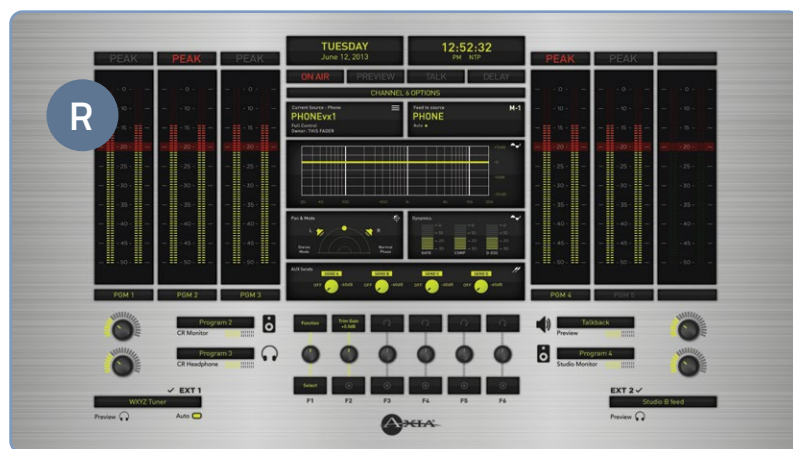
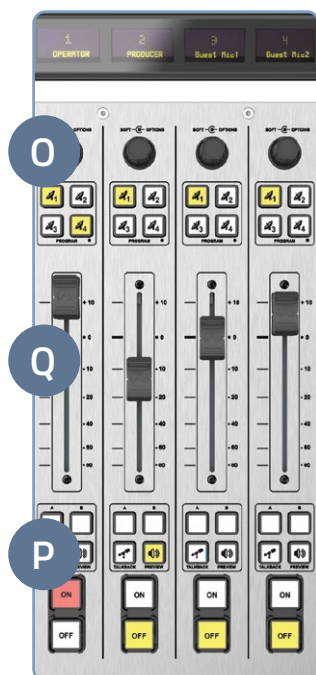
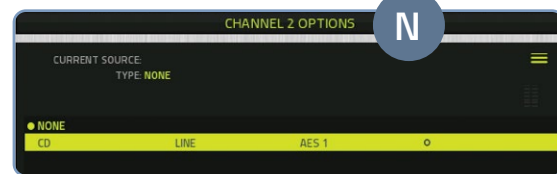
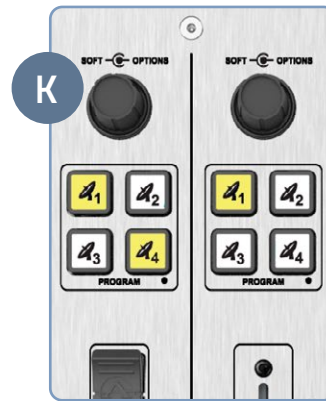
- a. In the left column under "I/O subsystem main", **select** "Destinations" (H).
- b. When prompted for authentication **enter** user name "user", password is left blank.
- c. **Enter** useful labeling in the "Name" field (I).
- d. **Click** the browse button (J) to the right of the "Channel" field and **select** the CR Monitor source from the PowerStation.
- e. **Click** the "Apply" button.
- f. Continue to Step 12.



SOURCE CONFIGURATION (CONT.)



12. On the Fusion Console Surface, **press** the channel encoder knob (K) found at the top of the fader strip for Channel Options.
13. The connected video monitor will display the Channel Options (L). **Rotate** the encoder knob (K) one step to select the source window. (Selected options will be outlined in yellow.) Once the desired option is selected, **press** the encoder knob (K) to enter the selection.
14. **Select** the "Current Source" option (M). The next view will show configured source profiles (N).
15. **Rotate** the encoder knob (K) to highlight the source just created.
16. **Press** the encoder knob (K) to select the highlighted source.
17. **Press** the Program 1 button on the fader strip (O) so it is illuminated.
18. **Press** the "On" button (P) on the fader strip.
19. **Move** the fader (Q) up-you should hear audio. The meters on your video display should be active (R).
20. Note: To hear the audio, make sure Program 1 is selected in the monitor section for CR Monitor and that the volume is at an appropriate level. **For StudioEngine users only:** make sure the xNode output feeding your speaker has been assigned the CR Monitor source output of the StudioEngine.
21. Repeat "Source Configuration" steps to configure additional sources.



YOUR SETUP IS COMPLETE!

That's it! You are now ready to experience the Axia Fusion, a powerful, flexible and easy to use console, packed with all of the capabilities and features you need. Enjoy!

This Page Intentionally Left Blank

This Page Intentionally Left Blank

This Page Intentionally Left Blank

QUICK LINKS

Subscribe to our Newsletter

Weekly updates on all things broadcast via email

TelosAlliance.com/newsletter

Social Media

Facebook: [@TelosAlliance](https://www.facebook.com/TelosAlliance)

Twitter: [@TelosAlliance](https://twitter.com/TelosAlliance)

LinkedIn: [/TelosAlliance](https://www.linkedin.com/company/TelosAlliance)

YouTube: [TelosAllianceTV](https://www.youtube.com/TelosAllianceTV)

Product Catalog

TelosAlliance.com/catalog

24/7 Tech Support

Radio: +1 (216) 622-0247

TV: +1 (717) 735-3611

Radio: support@telosalliance.com

TV: support@linearacoustic.com

